

MASSIF

PLANK

COLLECTION LE MONDE: ARTISANALE

American Oak

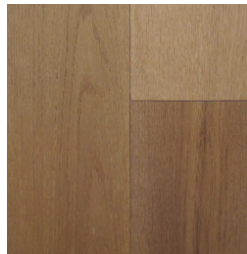
Up to 10 Widths and 10 Lengths

Rift & Quartered or Live Sawn Cuts Available



PALE CREAM

American Oak



TAWNY OAK

American Oak



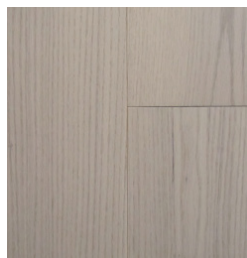
NAKED

American Oak



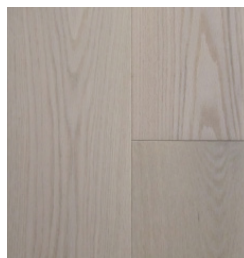
**BURNT
COPPER**

American Oak



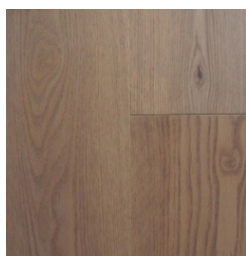
**MOCHA
CREAM**

American Oak



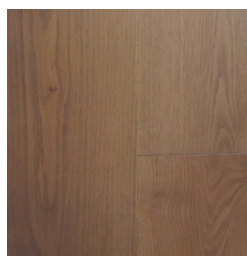
**FRENCH
VANILLA**

American Oak



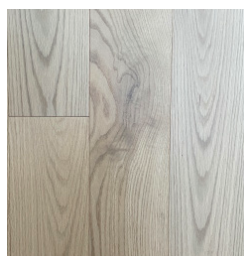
BARN

American Oak



**BURNISHED
BRONZE**

American Oak



PURE OAK

American Oak

SPECIFICATIONS

(S26)

DIMENSIONS

(W X T X L)

- 4" x 3/4" x 2 - 10'
- 5" x 3/4" x 2 - 10'
- 6" x 3/4" x 2 - 10'
- 7" x 3/4" x 2 - 10'
- 8" x 3/4" x 2 - 10'
- 9" x 3/4" x 2 - 10'
- 10" x 3/4" x 2 - 10'

CONSTRUCTION

- 4mm Dry Sawn Veneer
- 2-Ply Hardwood (Oak) Core & Backer

CUT

- Rift & Quartered
- Live Sawn

FINISH

- UV Matte Urethane

GRADE

- Select Plus

INSTALLATION

- Full Spread Glue
- Nail with Glue Assist
- T&G Glue – Float

ACCESSORIES

- Custom: Nosing, Air Vents, Transitions, Stair Parts
- Doors

ORDERING

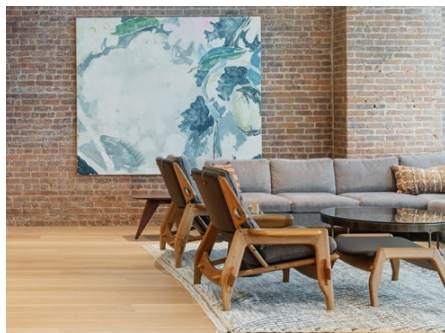
- Stocked Special Order; 3-4 Weeks
- Back Order is 8-12 Weeks

MASSIFPLANK.COM

Wood is a natural product and variances in colour, grain, texture, gloss, and overall dimensions of the plank may vary from this sample and the specifications on this label to the actual product received. 2406.19

COLLECTION LE MONDE: ARTISANALE

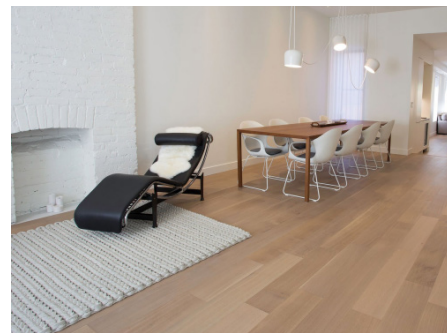
INSTALLATIONS



PURE OAK
Rift & Quartered



PALE CREAM
Rift & Quartered



MOCHA CREAM
Rift & Quartered